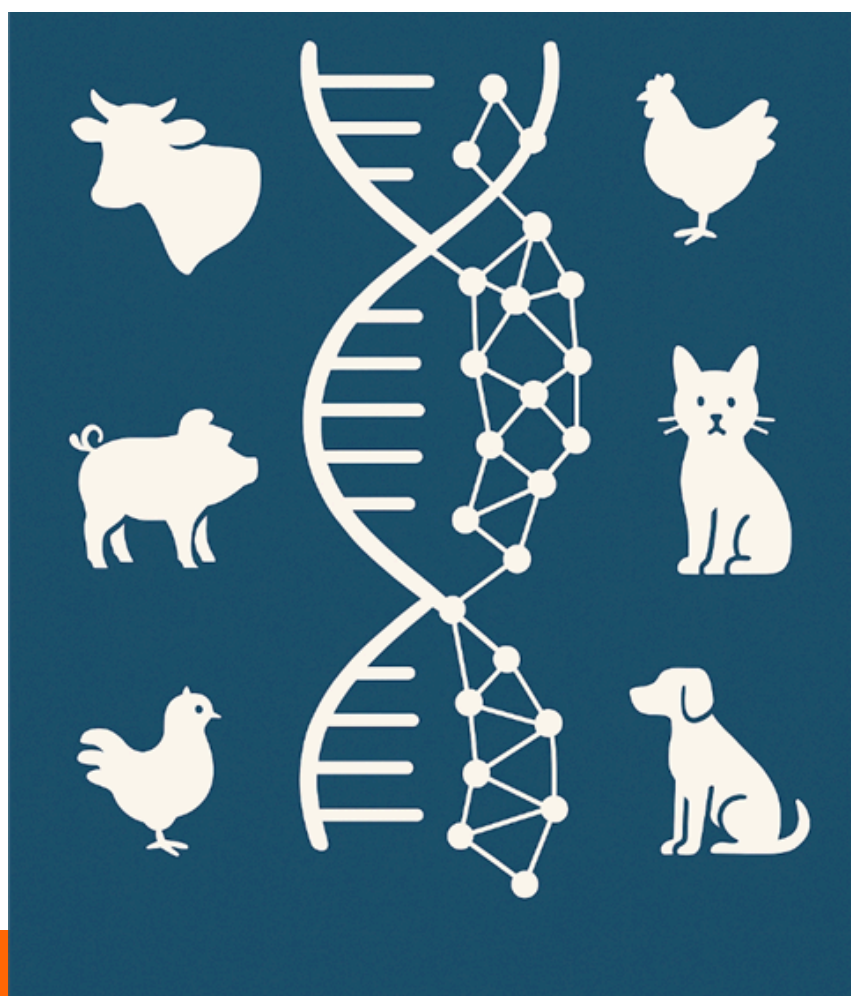


# **BIG DATA & ARTIFICIAL INTELLIGENCE IN VETERINARY MEDICINE**



## **FULL PROGRAM**

**ANNUAL SCIENTIFIC  
MEETING**

**DATE:**  
24 October 2025

**LOCATION:**  
Galileegebouw (FOD) Brussels

# MORNING PROGRAM

**9.00** Registration with coffee and pastries

**9.30** Welcome and introduction

**9.45** Keynote presentation

**PROF. ALASDAIR COOK** (MUJIKA LIMITED, UK)

From Algorithms to Action: Big Data and Artificial Intelligence in Veterinary Medicine

**10.30** Coffee break & networking

**11.00** Keynote presentations

**ASS. PROF. MIEL HOSTENS** (CORNELL UNIVERSITY, USA)

Effectively Implementing Artificial Intelligence at the Interface Between Veterinary and Dairy Science

**DR. JÜRGEN VANGHEYTE** (ILVO, BELGIUM)

Unlocking the Power of Data Spaces: Building Trust, Creating Value, and Accelerating Innovation in Veterinary and Agricultural Systems

**12.30** Lunch

**13.15** General assembly VEE members

## SPONSORS



Volksgezondheid  
Veiligheid van de Voedselketen  
Leefmilieu

# AFTERNOON PROGRAM

## 14.00 Abstract presentations

**Michèle Driesen** (Sciensano): Network analysis of Belgian poultry movements: Prioritizing farms for surveillance and risk management

**Laura Courtens** (UGent): Evidence of ineffective cleaning and disinfection protocols in livestock transport: A pilot study

**Gaëtan De Gryse** (Sciensano): Diagnostic tools to manage gB ELISA aspecificity in IBR surveillance

## 14.45 Poster pitches

## 15.00 Coffee break and poster session

## 15.30 Abstract presentations

**Guy Hendrickx** (Avia-GIS): The MOOD Platform: Turning epidemic intelligence into action

**Qamer Mahmood** (UGent): Use of the Biocheck.UGent™ scoring tool to evaluate biosecurity and its link to antimicrobial use in commercial broiler farms in Pakistan

**Tong Wang** (Kreavet): From model to decision support: climate-based risk mapping of gastrointestinal nematodes in grazing ruminants

## 16.15 Closing remarks and award for best scientific contribution

## 16.30 Reception

Register [here](#) before 23 October

# Galileelaan 5, 1210 Brussels

Ground floor (on the right once you enter the building)

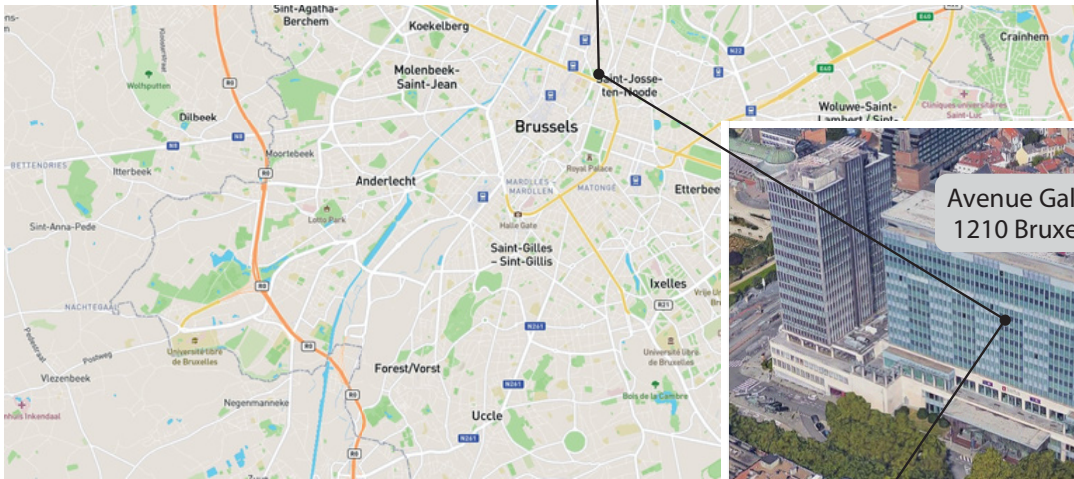


agence fédérale des médicaments et des produits de santé  
federal agentschap voor geneesmiddelen en gezondheidsproducten

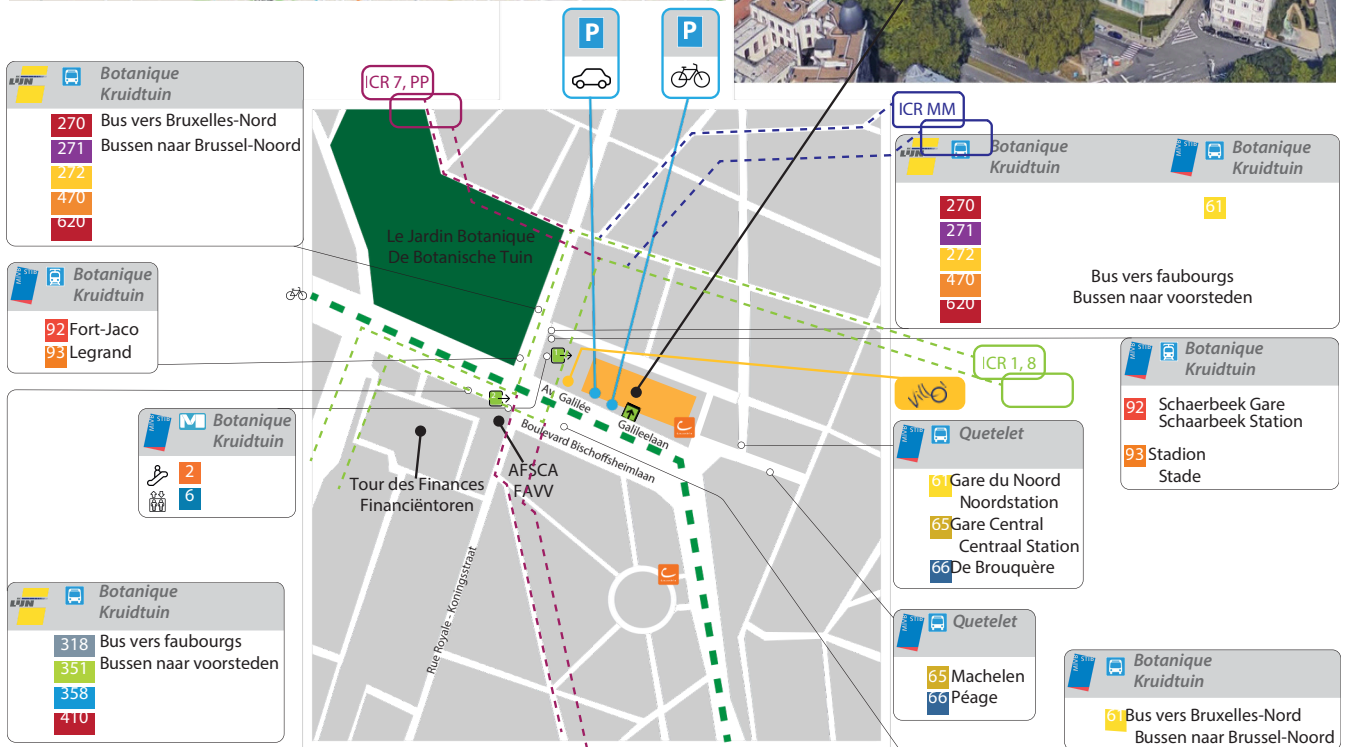


service public fédéral  
SANTÉ PUBLIQUE,  
SECURITE DE LA CHAÎNE ALIMENTAIRE  
ET ENVIRONNEMENT

federale overheidsdienst  
VOLKSGEZONDHEID,  
VEILIGHEID VAN DE VOEDSELKETTEN  
EN LEEFMILIEU



Avenue Galilée - Galileelaan 5  
1210 Bruxelles/Brussel



**B** Bruxelles-Congrès  
Brussel - Congres

Person icon = 6 min. (0,5 km)

Bicycle icon = 6 min.

**B** Bruxelles-Nord  
Brussel-Noord

Person icon = 17 min. (1,3 km)

Bicycle icon = 7 min.

**B** Bruxelles-Centrale  
Brussel - Centraal

Person icon = 18 min. (1,5 km)

Bicycle icon = 8 min.

**Botanique Kruidtuin**

2 92 61 270 272 351 410 620  
6 93 271 318 358 470

Person icon = 2 min.

**Quetelet**

61 65 66

Person icon = 2 min.

Car parking Q-park Brussel - Pacheco  
(Pachecolaan 7, 1000 Brussels)